

OxyMaster 16TDP Oxygen and Dew Point Analyzer

APPLICATION: The **OxyMaster** is a low cost solution to applications that require both trace moisture and trace oxygen measurements. The OxyMaster is an ideal choice for applications where both gases are generally considered disruptive or contaminants. Oxygen and moisture can be problems in the production of high purity gases, pharmaceuticals, monomer storage, glove boxes, furnace atmospheres, solder reflow, nuclear rod processing, high purity welding and many other applications. It consists of a main analyzer unit in combination with remote mounted trace oxygen and moisture flow through sensors.

DESCRIPTION: **Model OxyMaster 16TDP** is an instrument designed to measure oxygen and moisture. Oxygen may be configured for measurement in trace ranges between 0-10,000 PPM; Moisture in trace levels between 0.1 to 1000ppm. It comes complete with:

- two 4-20mA outputs
- one programmable relay alarm
- graphic display
- data acquisition
- universal power supply 85-230VAC or 24VDC
- SS flow through sensor housings
- instruction manual and a one year warranty.

\$ 7,895.00

Oxymaster 16TDP
Oxygen and Trace Moisture Analyzer



Oxygen Sensor



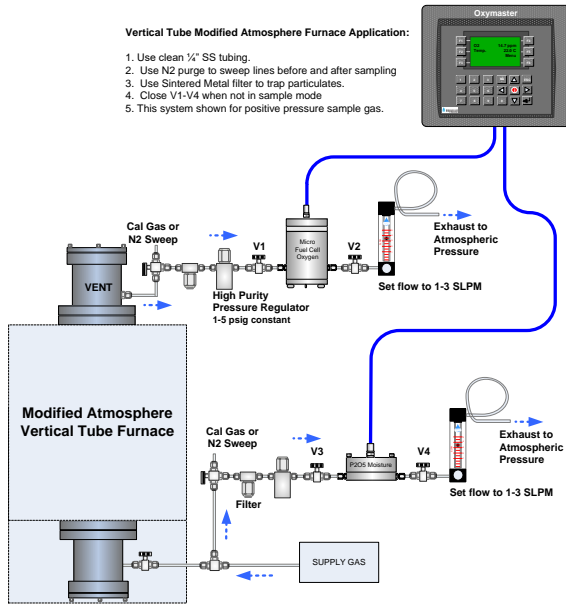
Trace Moisture

Optional/Spare Parts

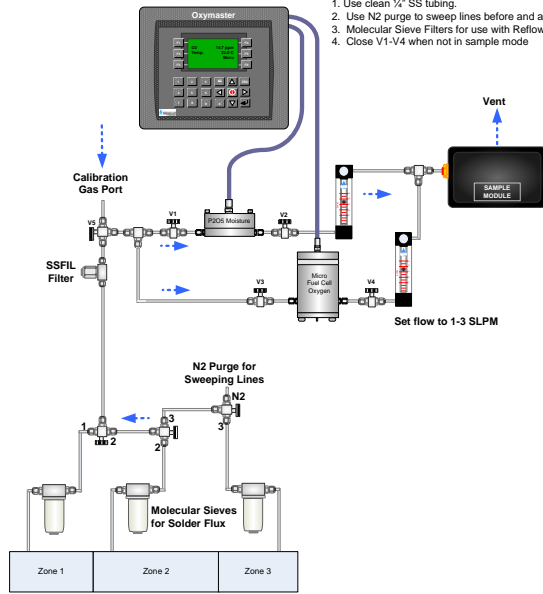
MFC/CO2	Micro-fuel cell only for CO2 and Oxidizer background gas	\$ 465.00
MFC/PER	Micro-fuel cell only for % range	\$ 412.00
MFC/PPM	Micro-fuel cell only for ppm range	\$ 412.00
16T 304	Micro-Fuel cell, PPM, Acid Electrolyte, w/ SS Sample Chamber	\$ 1,596.00
16T 303	Micro-Fuel cell, PPM, Acid Electrolyte, w/ SS Sample Chamber	\$ 1,545.00
PPM/S	Trace moisture sensor with stainless steel flow through head	\$ 2,415.00
ANALYZER	Only	\$ 3,554.00
SMU	Vacuum Pump Sample Module Universal 115/230 VAC operation	\$ 770.00
SFIL	Stainless steel sintered filter, 30 microns with fittings	\$ 225.00
Wafer	Trace Moisture Sensor: spare P2O5 Wafer	\$ 600.00
CASEM3075	Rugged Shipped Case for transportation of Oxymaster	\$ 550.00

Vertical Tube Modified Atmosphere Furnace Application:

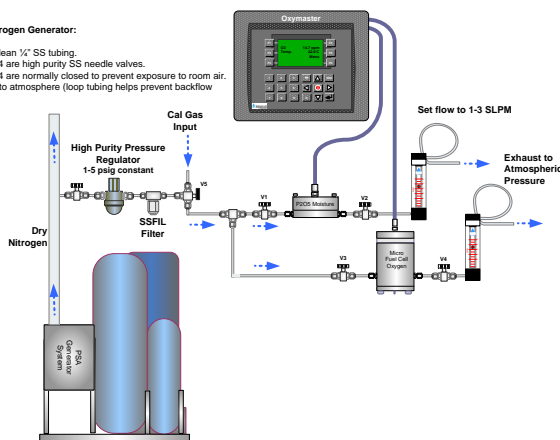
1. Use clean 1/4" SS tubing.
2. Use N2 purge to sweep lines before and after sampling
3. Use Sintered Metal filter to trap particulates.
4. Close V1-V4 when not in sample mode
5. This system shown for positive pressure sample gas.


Extract Sample gas using pump:

1. Use clean 1/4" SS tubing.
2. Use N2 purge to sweep lines before and after sampling
3. Molecular Sieve Filters for use with Reflow Fluxes
4. Close V1-V4 when not in sample mode


PSA Nitrogen Generator:

1. Use clean 1/4" SS tubing.
2. V1-V4 are high purity SS needle valves.
3. V1-V4 are normally closed to prevent exposure to room air.
4. Vent to atmosphere (loop tubing helps prevent backflow)


Annealing or Heat Treat Furnace Application:

1. Use clean 1/4" SS tubing.
2. Use N2 purge to sweep lines before and after sampling
3. Use Sintered Metal filter to trap particulates.
4. Close V1-V4 when not in sample mode

