

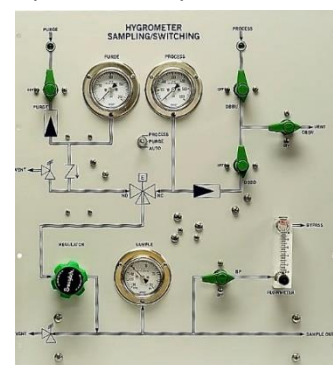
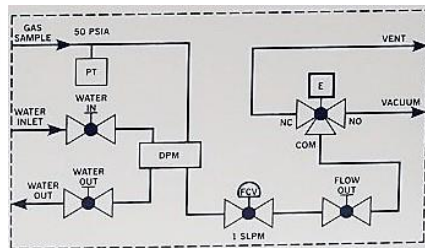
## ***DewMaster Hygromax Precision Hygrometer and Sampling System***

**Description:** The **Model DewMaster Hygromax** Precision Dew Point Hygrometer system consists of a two parts: the Hygromax DewMaster chilled mirror hygrometer and the sample switching system.

The **Hygromax DewMaster Hygrometer** features a chilled mirror sensor that can be set for air cooling or liquid cooling. The system is equipped with manually controlled valves to enable customer supplied liquid cooling when lower dew point measurement is required. The Hygromax is also equipped with a Mass Flow Controller for control of the gas flow through the chilled mirror sensor as well as an inline pressure transducer for monitoring of the sample pressure. A 3-way sample switching solenoid valve is provided in the Hygromax DewMaster system for directing the sample exhaust to vent or a vacuum source. The Hygromax is typically fitted with an S3 three stage chilled mirror although depending on desired dew point measurement needs, an S2 two stage sensor may be used.

The **sample switching system** works in combination with the Hygromax DewMaster Hygrometer to provide the feature of switching between pressurized process gas and purge gas streams. Selection of either stream is controlled by an on-board 3 way solenoid valve. LED lamp indicators show which stream is active. The sample switching system is plumbed in line leading into the DewMaster Hygrometer. Included within the standard sample switching panel:

- Common high purity pressure regulator to control pressure of purge or sampled process gas streams
- Pressure gauges on the purge & process gas input streams and on the regulated output to the Hygromax
- Pressure relief valve on the purge gas to prevent over pressure situations
- High Purity Manual selector valves on the purge and process gas streams
- Bypass control valve with valved flowmeter to control bypass flow for speedy response time
- High purity sintered metal filters on the purge and process gas streams
- Venting valves for both the purge and the process gas streams
- LED indicator lamps for Purge and Process gas activation
- 3-way high purity solenoid valve for automatic control of purge or process sample modes



The **DewMaster Hygromax** comes complete with a full function display showing measured parameters, optics performance, and operational status/ alarm information. Functionally, the DewMaster provides Automatic Balance Cycle (ABC), Programmable Balance Cycle (PABC), Manual Balance Cycle (MABC), real time clock w/date,

measurements in °C or °F, scalable voltage and current outputs, RS232, and a programmable alarm, Control Servo for Mirror temperature overrides (Heat and Cool), One year warranty and instruction manual

**Notes:**

1. The DewMaster Hygromax offers many features that allow the User to understand how the Chilled Mirror Sensor is operating. These include the ability to program an ABC or manually force maximum heating or cooling of the TEC.
2. The S-Series chilled mirror sensors are flow through sampling and are equipped with 1/4inch Swagelok fittings. Aluminum construction is appropriate for most non-aggressive background gases.
3. The X3 body is constructed of 316SS and may be configured with Hastelloy or Teflon wetted materials. Inquire for pricing.
4. The S-Series sensors are equipped with a liquid chill port for the flow of chilled liquid through the sensor chassis to aid in cooling the TEC to allow for lower dewpoint measurement.
5. The X-series sensors are designed as fan cooled or liquid cooled, but not both. The X3F and X3SF feature fans used to acquire more efficient heat exchange of the TEC and hence lower dewpoints.
6. Standard DewMaster is not rated for use in Hazardous areas. Please inquire for use 100% Oxygen.

**TO ORDER THE DEWMASTER HYGROMAX:**

1. **The standard DewMaster Hygromax is supplied with KULITE BME-76-100-50A pressure transducer and an **S3** three stage chilled mirror sensor. The DewMaster Hygromax comes complete as described above.....**\$20, 295.00**  
**Standard delivery is 4-8 weeks****
  
2. **The standard Sample Switching Panel (Purge or Process Gas Selected gas streams) is supplied as described above.....**\$13,378.00**  
**Standard delivery is 4-8 weeks****

**Optional Version DewMaster Hygromax where the customer supplies a DewMaster Hygrometer and this is retrofitted into the Hygromax System (Generally provided with an S3 sensor but an S2 may be used for minimal dew point requirements).....**\$15,889.50**  
**Standard delivery is 4-8 weeks****

**Standard Shipping Crate:**

**\$225.00 adder plus shipping costs (holds up to 4 units)**

S-18248	48 x 30 x 30"	47 1/4 x 29 1/4 x 29 1/2"
---------	---------------	---------------------------

**LIST ACCESSORIES/ SPARE PARTS/ SPECIAL SERVICES AS SEPARATE LINE ITEMS:**

<b>511 SS Tag</b>	STAINLESS STEEL IDENTIFICATION TAG, can be riveted or wire connected To the instrument, CUSTOM ETCHED PER CUSTOMER REQUIREMENTS 1" High x 2" Wide x 16 gage SS Tag, Laser Etched, ¼ inch H lettering, 3 lines Advanced Graphic Engraving (includes 2)	<b>\$ 125.00</b>
<b>CASE 550</b>	Foam lined transportation case specified to protect instrumentation during shipping, Large case fits (1) DewMaster Hygromax and (1) Sample Switching panel	<b>\$1,500.00</b>
<b>CASE 1640</b>	Foam lined transportation case specified to protect instrumentation during shipping. Medium case fits (1) DewMaster Hygromax or (1) Sample Switching panel.	<b>\$ 500.00</b>
<b>RSCBL</b>	RS-232 Single Ended Serial Cable for Programming w/ manual	<b>\$ 45.00</b>
<b>USB</b>	Converts Serial output to USB, comes with software disk	<b>\$ 110.00</b>
<b>SERIALDAQ</b>	Captures serial output (TXT) into USB memory Stik (can be captured into EXCEL)	<b>\$ 350.00</b>
<b>BTDAQ</b>	Converts Serial output from DewMaster to Bluetooth and captures the data into an EXCEL. Spreadsheet on Windows 7,8 or 10 based System. Requires Customer supplied EXCEL loaded onto PC. PC must include 2 available USB Ports. <b>Kit Includes:</b> <ul style="list-style-type: none"> <li>• <b>Serial to Bluetooth Adapter for Connection to the DewMaster</b></li> <li>• <b>Attachment kit</b></li> <li>• <b>Bluetooth to USB adaptor for customer PC</b></li> <li>• <b>USB Memory stik w/ ETI Install software</b></li> <li>• <b>Installation/ Operation Manual</b></li> </ul>	<b>\$ 750.00</b>

**LIQUID COOLING OPTIONS:**


**MODEL 601**  
 Low Temp Chiller  
 -15°C Chill Capacity  
 \$6,583.50



**MODEL DP-300**  
 TEC Chiller  
 -10°C Chill Capacity  
 \$3,360.00

Insulated Hose Kit for Chiller: \$175.00

**Extended Warranty/Calibration Options: Please list as separate line items:**

<b>3EXTW</b>	3 Year Extended Warranty includes repairs covered in the warranty statement	<b>10% of TOTAL</b>
<b>3YNIST1P</b>	3 NIST Traceable Calibrations for the price of 2 (1 Parameter)	<b>\$ 1,210.00</b>
<b>3YNIST2P</b>	3 NIST Traceable Calibrations for the price of 2 (2 Parameters)	<b>\$ 1,430.00</b>